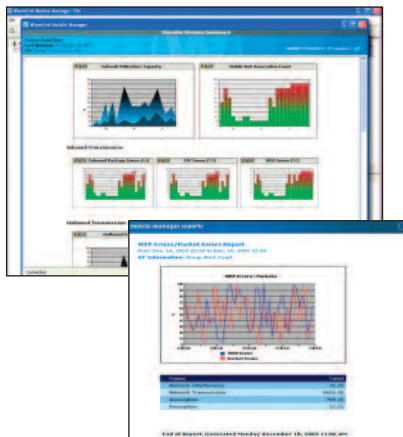




# Wavelink Mobile Manager

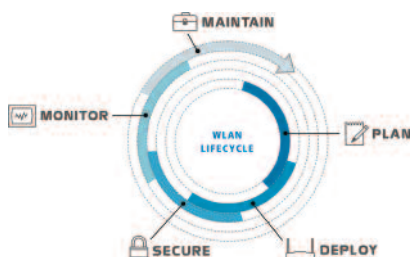
## Part of the ORiNOCO Smart Wireless Suite



### Smart Wireless Suite:

A new suite of tools to manage and secure ORiNOCO WLANs.

- Plan, deploy, maintain wireless networks
- Eliminate manual maintenance tasks
- Enforce security consistently
- Centrally manage infrastructure
- Policy-based configuration and security



### Maximize ROI on Proxim Wireless Networks

Proxim wireless networks improve productivity and enable innovative new business applications in health care, manufacturing and education. In addition to network infrastructure, software infrastructure is needed to maximize the potential of the Proxim networks. For ORiNOCO and other access points, Wavelink Mobile Manager centralizes access point management, enforces security policies, and assists in maintenance tasks – ensuring proper administration of the network and maximizing return on investment.

Mobile Manager provides:

- Consistent policy enforcement to increase reliability
- Integrates into existing management platform, such as HP OpenView
- Improved network availability, ensuring maximum access to business applications
- Active problem detection and repair to prevent support calls
- Proactive tools to reduce troubleshooting time

### Accelerate Planning, Configuration and Deployment

Mobile Manager has auto-discovery and profiling functions to assist in network roll-out. Mobile Manager will automatically detect all ORiNOCO and other access points on the network and apply a standard, administrator user-defined configuration. As new access points are installed, they automatically receive the correct configuration. The centralized management console offers:

- Access point inventory collection
- Centrally managed security settings
- Easy growth of wireless networks, locally and remote
- Automatic configuration across all access points

### Enforce and Extend Security

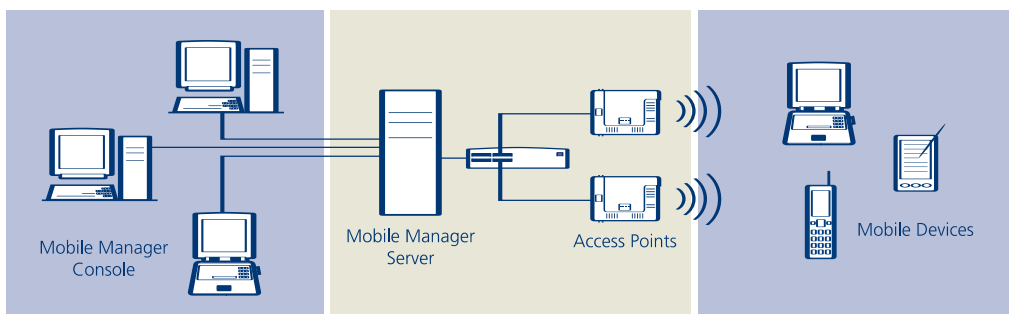
Mobile Manager sets, monitors and continually enforces all network security parameters on ORiNOCO access points – including SSID, WEP, EAP, WPA and 802.1x parameters. Beyond enforcing over-the-air security and authentication policies, ORiNOCO devices and Mobile Manager work together to find rogue access points – a potentially serious threat to network security. Specific actions include:

- Airwave monitoring by ORiNOCO access points and clients
- Analysis of airwave data by Mobile Manager to detect unauthorized devices
- Security extended to non-WPA devices such as barcode scanners and handhelds through automatic WEP key rotation
- Automatic WEP key rotation for maximum security
- Enterprise-wide access control lists

### Improve Network Health and Performance

Mobile Manager's intuitive user interface enables visual assessments of network conditions to allow quick response. Specific thresholds can be set to trigger alerts sent to email lists, pagers or an SNMP monitoring system. Even better, Mobile Manager can proactively diagnose, troubleshoot and repair many error conditions before users are impacted. Monitored conditions include:

- Capacity
- Utilization
- Signal quality
- Most and least-used equipment
- And many more



## About Proxim Wireless

Proxim Wireless is a global leader in networking equipment for Wi-Fi and broadband wireless networks. Proxim provides solutions for enterprise applications, last mile access, municipal broadband networks, and cellular backhaul. Product families include ORiNOCO and TeraStar Wi-Fi products; Tsunami, TeraBridge, Gigalink, and TeraOptic Ethernet bridges, and Lynx point-to-point digital radios.

# Wavelink Mobile Manager Specifications

KEY FEATURE	CAPABILITIES AND BENEFITS
Centralized Management	Visualize and monitor your organization's entire wireless LAN from a central management console, including remote sites and locations. Receive timely performance alerts, events, statistics and other important network information.
Profile-based Configuration	Create global templates defining network and configuration settings and apply them to groups of access points in a few simple steps, eliminating labor intensive, repetitive tasks.
Rogue Device Detection*	Mobile Manager monitors both wired and wireless networks providing a comprehensive method to detect rogue and foreign access points and mobile devices. If a rogue device is detected, Mobile Manager will generate an alert with detailed information that can be acted upon, such as the rogue device's MAC address and the switch name and port number from which it communicated.
Health & Performance Dashboard	The Dashboard provides a detailed snapshot of the state of your wireless network. Visually assess key performance indicators, such as capacity, utilization, and signal quality, as well as most-and-least used equipment – and take action.
Statistical Reporting	Generate daily, weekly or monthly usage and trend analysis reports that facilitate troubleshooting and capacity planning, and provide service level reporting.
Secure Management Interfaces	SNMPv3 and SSL protect against unauthorized AP changes via the management interface
Site-Survey Link	Connect the data collected from site-surveys to Mobile Manager by importing and applying key settings such as IP address, Transmit Power and Channel to APs under management.
Multi-vendor Support	Mobile Manager provides a single management interface for the leading wireless infrastructure manufacturers such as Cisco, Symbol, Proxim, Avaya, HP and Dell.
Automatic Alert Notification	Instantly be alerted to network events. Define network events to which you want to be alerted, such as AP down or Rogue APs, and receive alerts automatically via e-mail or pager whenever the network event occurs. Alerts can even be forwarded to other management systems, such as HP OpenView™ or CA Unicenter™.
Access Rights Management	Define and control to what degree your IT staff can manage your WLAN. The User Manager allows you to define Administrative, Read/Write, Read Only privileges.

## CUT COSTS AND BOOST PRODUCTIVITY

Mobile Manager reduces the administrative effort required to operate and support your network, and helps boost mobile-user productivity by enhancing network reliability. This table (left) summarizes the essential features, capabilities and benefits.

## ACCOMMODATE PRESENT AND FUTURE INFRASTRUCTURE

With Mobile Manager, you can handle today's access points and wireless infrastructure while leaving room for growth and enhancing your ability to respond quickly to unexpected changes — a new network, a new office or even the acquisition of another company. We support a wide range of access points from the leading manufacturers: Cisco, Symbol, Proxim, Dell, HP and Avaya. For the latest list of supported products and system requirements, please go to [www.proxim.com/wavelink/mobilemanager](http://www.proxim.com/wavelink/mobilemanager).

## SYSTEM REQUIREMENTS

Administrative Console	Deployed Services (Agents)
Pentium III, 450 MHz	Pentium III, 500 MHz
128MB RAM	256MB RAM *
60 MB Disk Space	500 MB hard disk space
Windows 2000 SP2 or greater	Windows 2000 SP2 or greater
Windows XP	Windows XP

\* Requires ordering Wavelink Avalanche licenses

\*\* (plus 500KB RAM per access point managed)

Proxim Wireless Corporation  
2115 O'Nel Drive  
San Jose, CA 95131

tel: 800.229.1630  
tel: 408.731.2700  
fax: 408.731.3675

[www.proxim.com](http://www.proxim.com)



Wi-Fi is a trademark of the Wireless Ethernet Compatibility Alliance, Inc. Windows and Windows Me are registered trademarks of Microsoft Corporation. DAT is a trademark of Nomadix.

©2004 Proxim Wireless Corporation. All rights reserved. Proxim and ORiNOCO are registered trademarks and the Proxim logo is a trademark of Proxim Wireless Corporation. All other trademarks mentioned herein are property of their respective owners. Specifications are subject to change without notice.